

ABOUT THE PROJECT



WHAT IS A BASIN?

A watershed basin is a specific land area where all flowing surface water drains to one body of water. The City of Everett looked at four basins, Merrill and Ring, North Creek, Penny Creek and Swamp Creek, before deciding on North Creek as the prioritized basin.

NORTH CREEK

Everett considered many factors in selecting the North Creek Basin for the Plan. North Creek headwaters start in Everett, and the creek flows through many other communities to Lake Washington via the Sammamish River. North Creek basin was chosen for the following reasons:

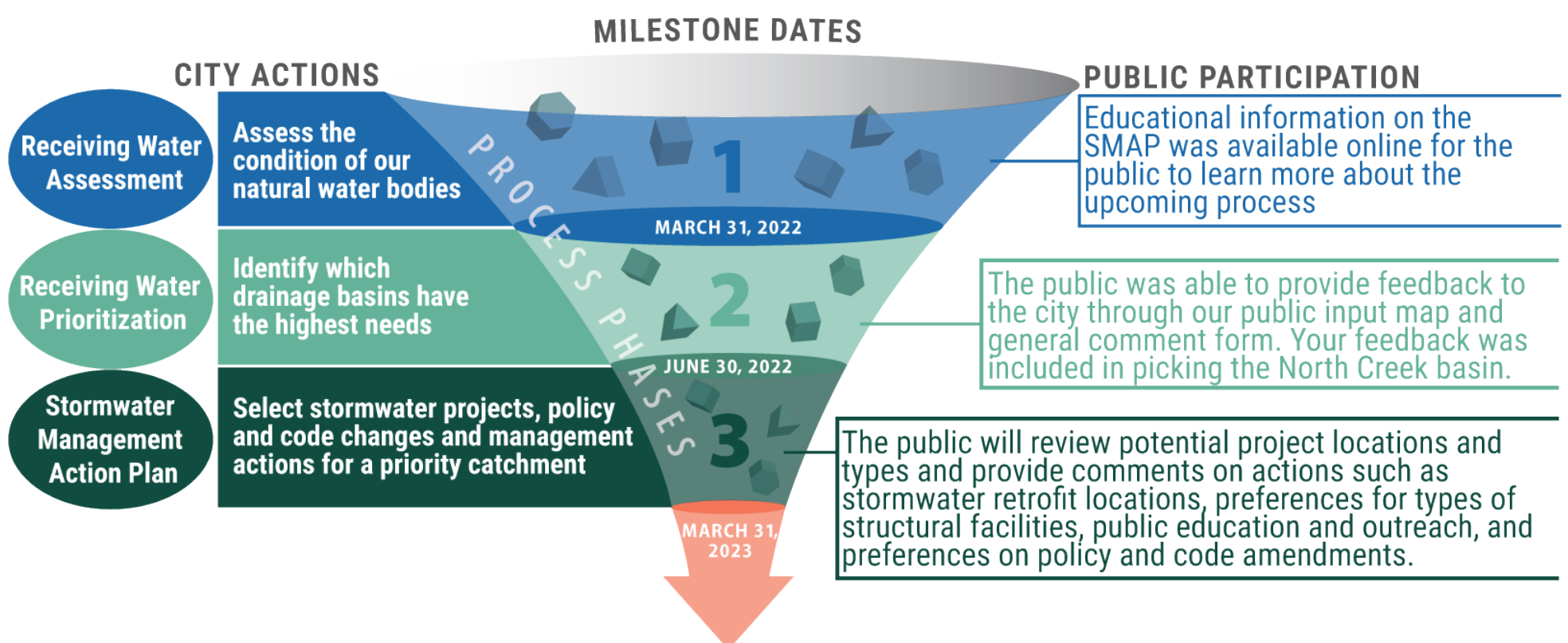
- Large areas of pollution-generating surfaces, such as roadways that are currently untreated before draining into North Creek.
- Lower development pressures, meaning fewer construction projects on vacant land or existing buildings that would provide new or improved stormwater facilities are expected.
- Larger population of overburdened communities.
- More opportunity to address tree canopy and open space.
- Headwaters to the North Creek.

LEARN MORE

Point your cell phone camera at the image to access the web page.



PROCESS



What 's next in the North Creek basin?

- Potential targeted or customized stormwater actions, such as prioritized inspection or maintenance programs
- Possible changes to land development policies and codes
- Potential stormwater management projects in your neighborhood



PROVIDE FEEDBACK



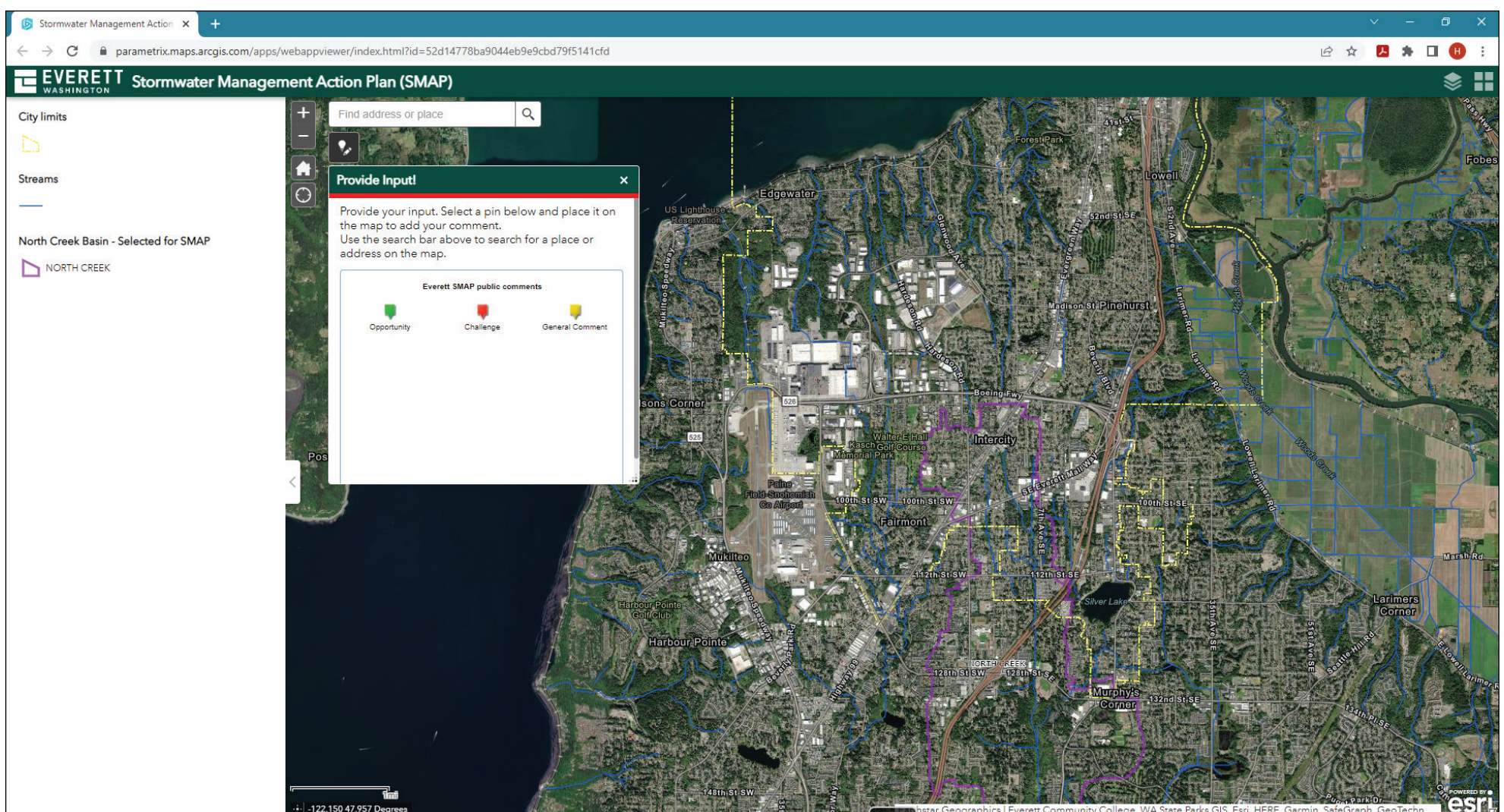
Your input is valuable to the City of Everett in the development of stormwater actions for the City's Plan. You can provide comments to the City via the interactive public input map included in the StoryMap. We'd like to hear your feedback on areas such as

- Drainage issues
- Ways to improve water quality
- Suggestions for conservation areas and concerns about pollution

You can search the map by address to find the location where you want to place a comment.

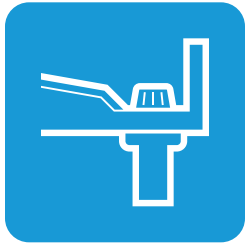
Provide your comments via the StoryMap.

**COMMENT
VIA STORYMAP**



POTENTIAL ACTIONS

The City is considering a wide range of potential actions, which include different programs and projects that will improve water quality in North Creek. We need your input to decide what actions to take. Potential actions include:



Regional treatment facilities: Treatment facilities divert stormwater from streams and filter polluted stormwater before entering the stream.



Habitat enhancement opportunities: Healthy habitats and wetlands with enhanced biodiversity can improve the quality of water bodies. Enhancing areas around streams to prevent runoff from entering the stream can improve stream health.



Land conservation: Forests and wetlands are natural areas that can filter and absorb stormwater, improving water quality and reducing flooding.



Debris removal programs: Increased street sweeping and trash pick-up help keep surfaces clean of pollutants and debris that can be carried away by stormwater and drain to the stream.



Public education programs: These programs include educating the public on litter prevention, proper disposal of trash and recyclables, disposing of pet waste, proper use of lawn chemicals, precautions for washing cars, precautions in changing motor oil and proper disposal of household hazardous chemicals.

Tell us what actions you'd like to see via the StoryMap or the survey.

**COMMENT
VIA STORYMAP**



**COMMENT
VIA SURVEY**



HOW YOU CAN MAKE A DIFFERENCE



As the City of Everett's Plan is underway, there are actions you can take to improve water quality in your city.

BE THE SOLUTION TO STORMWATER POLLUTION



When cleaning outside, use minimal amounts of cleaners and detergents with phosphates. Immediately cleanup spills and dispose of unwanted household chemicals or leaky containers.



Keep your vehicle in good condition. Ensure that oil, coolant, or antifreeze leaks are fixed right away. If you wash your car at home, make sure the dirty car wash water does not go down the storm drain.



Pick up after your dog every time so that harmful bacteria doesn't get washed down the storm drain to local waterways. Scoop pet waste, bag it, and put it in the trash.



Increase the amount of vegetation on your property and allow stormwater to soak into the ground. Apply fertilizers and pesticides sparingly, and don't apply right before it rains. Use slow release fertilizers.



Keep neighborhood storm drains free of debris and trash. Put lawn clippings in places that will not wash into storm drains. Only rain down the drain; never pour anything into a storm drain.



**THANK YOU
FOR ATTENDING**



Thank you for attending the **City of Everett Stormwater Management Action Plan: North Creek Open House.**

Please **exit** here.

