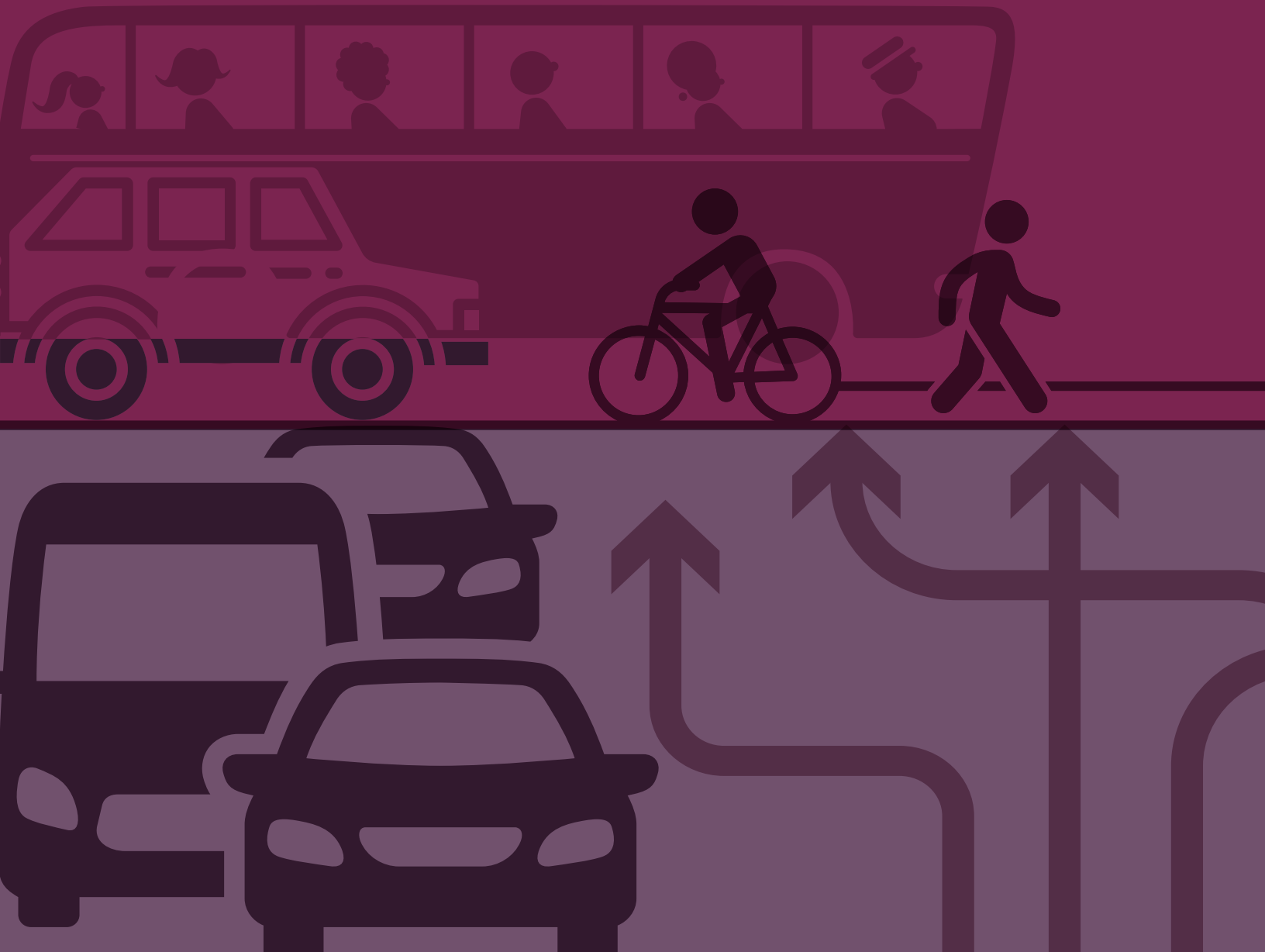


Appendix A1: Transportation Improvement Program Projects (2025-2029)



FY 2025 - FY 2029 Transportation Improvement Program

Project ID	Project Sponsor	Project Name	Project Description	Project Limits	Funding Source	FY 25	FY 26	FY 27	FY 28	FY 29
CL20200138	Brightline West	Brightline West High Speed Rail	Construct and operate an interstate highspeed electric passenger rail service from southern California to southern Nevada, along the I-15 corridor on the Brightline West right of Way - Within the State of Nevada, (representing \$2B out of of the total \$8B system cost). Includes \$30M Brightline funds for NDOT grant management.	From I-15 at the Nevada/California state line to West Warm Springs Rd. and South Las Vegas Blvd	Brightline West	\$30,000,000	-	-	-	-
	Clark County	Beltway Trail	Bike & Ped Improvements/Enhance Multimodal Connectivity	CC-215 to Spencer Street	Locally Funded - Capital Improvement Program	-	-	-	\$3,000,000	-
CC_012	Clark County	Clean Diesel Street Sweepers	Purchase Clean Diesel Street Sweepers	N/A	CMAQ - Clark County	-	-	-	\$3,090,000	-
CC_013	Clark County	Desert Inn Road 3R	Pavement Preservation	W. Desert Inn Rd from Durango Drive to Valley View Blvd	STBG	-	-	-	-	\$27,504,670
	Clark County	I-515 TRAIL	Bike & Ped Improvements/Enhance Multimodal Connectivity	Charleston Blvd to Sahara Ave	Locally Funded - Capital Improvement Program	-	-	-	\$1,300,000	-
CC_004	Clark County	McLeod Bike Path	Bike Path	Pecos-McLeod Interconnect to Sunset Rd	CMAQ - Clark County	-	-	\$4,673,688	-	-
	Clark County	Rainbow Blvd	3R Reconstruct/Rehab/Resurface	Blue Diamond Road to CC-215	Locally Funded - Capital Improvement Program	-	-	\$18,000,000	-	-
CC_XXX	Clark County	Red Rock Legacy Trail Phase 1B	Multi-Use Bike + Pedestrian Path	Summerlin Trailhead to Visitor Center Underpass & Bonnie Springs Road to Special Recreation Use Permit Area Trailhead	CMAQ - Clark County	-	-	-	-	\$19,205,500
CC_XXX	Clark County	Red Rock Legacy Trail Phase 1B	Multi-Use Bike + Pedestrian Path	Summerlin Trailhead to Visitor Center Underpass & Bonnie Springs Road to Special Recreation Use Permit Area Trailhead	TAP CL	-	-	-	-	\$3,300,000
	Clark County	Red Rock Legacy Trail Phase 5	Construct 5.3 miles of separated shared-use path	Hualapai Road/SR 160 to the Village of Blue Diamond in Red Rock Canyon	Locally Funded - Capital Improvement Program	-	-	-	-	\$10,000,000
	Clark County	Sahara Ave	(3R) Reconstruct/Rehab/Resurface	Durango Drive to Decatur Blvd	Locally Funded - Capital Improvement Program	-	-	\$7,000,000	-	-
CL20200119	Clark County	Spencer Greenway Trail	Spencer Greenway Trail	Not Location Specific	CMAQ - Clark County	\$303,246	-	-	-	-
CL20200116	Clark County	Beltway Trail Bridges East: Windmill	Beltway Trail Bridges East: Windmill	Various Locations	TAP CL STBG		\$2,000,000	-	-	-

Project ID	Project Sponsor	Project Name	Project Description	Project Limits	Funding Source	FY 25	FY 26	FY 27	FY 28	FY 29
CL20220048	Clark County	I-515/Sahara Interchange Study	Feasibility Study for a new interchange at the I-515 at Sahara To address the needs for I-515 Freeway serving Sunrise Manor residents and businesses and accessing the Southern Nevada Freeway system, the study will evaluate the feasibility of adding a new interchange	I-515/Sahara Interchange	Local Funds	\$2,300,000	-	-	-	-
CL20230011	Clark County	Clean Diesel Streep Sweepers	Clean Diesel Streep Sweepers	Not Location Specific	CMAQ - Clark County	\$526,316	-	-	-	-
CL20200118	Clark County	Clean Diesel Street Sweepers	Clean Diesel Street Sweepers	Not Location Specific	CMAQ - Clark County	-	\$4,291,579	-	-	-
CL20200117	Clark County	Jones Boulevard Reconstruction	Jones Boulevard Reconstruction from Tropicana to Sahara	From Tropicana to Sahara of Distance (mile) 3.05	STBG	\$12,631,579	-	-	-	-
CL20230012	Clark County	Various Residential Streets	At various locations upgrade of existing street lighting to LED.	Not Location Specific	Carbon Reduction Program > 200K (Clark)	-	\$3,157,895	-	-	-
CL20200149	Clark County	Clark County 215, Cheyenne to Hualapai Widening	Clark County 215, Cheyenne to Hualapai Widening	Cheyenne to Hualapai Widening	Clark County Beltway	\$20,000,000	-	-	-	-
CL20200153	Clark County	Clark County 215, US 95 to Decatur Widening	Clark County 215, US 95 to Decatur Widening	US 95 to Decatur Widening	Clark County Beltway	-	\$40,000,000	-	-	-
CL20230006	Clark County Department of Air Quality	EV Charging Infrastructure on County-Owned Property	The installation of electric vehicle charging infrastructure will support the County's current plan to increase the number of electric vehicles to be included in its fleet as well as the uptick in privately-owned electric vehicles.	Not Location Specific	CMAQ - Clark County	-	\$526,315	-	-	-
CL20230005	Clark County Department of Air Quality	Smog-Free Clark County	County-wide Vehicle Repair Pilot Program to improve the air quality across the valley by providing financial assistance for emissions-related vehicle repairs, focusing on low-income residents with the most polluting cars.	Not Location Specific	CMAQ - Clark County	-	\$768,421	-	-	-
CL20240028	Clark County Department of Air Quality	Clark County Electric Firetruck	Replacement of a traditional firetruck with a hybrid electric firetruck in the Clark County Fire Department (CCFD) fleet. CCFD intends to use the hybrid firetruck on short runs, which occur closer to the fire house and more frequently. The addition of an electric firetruck to CCFD's fleet will limit the need to use diesel fuel, and minimize staffs' exposure to carcinogens when dismantling the equipment from the truck.	Not Location Specific	CMAQ - Clark County	\$1,520,000	\$730,000	-	-	-
DOA_CF	Clark County Department of Aviation	SNSA Expressway Interchange at I-15	New interchange	SNSA Expressway Interchange at I-15	DOA Funding	-	-	\$1,300,000	-	-

Project ID	Project Sponsor	Project Name	Project Description	Project Limits	Funding Source	FY 25	FY 26	FY 27	FY 28	FY 29
DOA_CF	Clark County Department of Aviation	SNSA Expressway to I-15	New roadway	SNSA Expressway to I-15	DOA Funding	-	-	-	-	\$100,000,000
DOA_CF	Clark County Department of Aviation	SNSA Connection to Jean	New roadway	SNSA Connection to Jean	DOA Funding	-	-	\$4,900,000	-	-
DOA_CF	Clark County Department of Aviation	SNSA Expressway Interchange PE and ROW	New interchange	SNSA Expressway Interchange at I-15	DOA Funding	-	-	\$37,000,000	-	-
DOA_NEW	Clark County Department of Aviation	Russell Rd. High T	Provide direct access to Terminal 3 and avoid intersection at Russell Rd.	Russell Rd. at Airport	DOA Funding	-	-	\$11,000,000	-	-
DOA_NEW	Clark County Department of Aviation	Terminal 1 departure curbside and lane expansion	Accommodate increase traffic at Terminal 1 passenger processing expansion level	Airport Campus	DOA Funding	-	-	\$11,330,000	-	-
CC_CF	Clark County School District	Clark County School District Safe Routes to School	Safe Routes to School Program	Various	TAP CL	-	-	\$293,550	\$293,550	\$293,550
CL20130144	Clark County School District	Safe Routes to School Coordinator	Continue funding of the SRTS Coordinator position and program at the Clark County School District.	Not Location Specific	TAP CL	\$263,488	\$269,955	-	-	-
HND_XXX	Henderson	Citywide Electric Vehicle Charging Stations	Install electric vehicle charging stations at City of Henderson owned facilities for both public and fleet charging	Locations include: Black Mountain Recreation Center, City Hall Basic Parking Lot, City Hall Parking Garge, Heritage Park, Justice Facility Parking Garage, MultiGen Center Parking Lot, Silver Springs Recreation Center, and Whitney Ranch Recreation Center.	Carbon Reduction Program > 200K (Clark)	-	-	\$548,645	-	-
	Henderson	Eastern Ave Improvements	Roadway Rehabilitation	Silverado Ranch to I-215	Locally Funded - Capital Improvement Program	-	-	-	-	\$1,600,000
HND_003	Henderson	Gilespeie - Volunteer to Via Inspirada	Upgrade and creation of roadway, sidewalks, bike lanes.	Volunteer Blvd to Via Inspirada	STBG	-	-	\$9,785,000	\$9,785,000	
HND_004	Henderson	Horizon DDI Operational Improvements	Upgrades to current DDI to improved traffic flow and capacity	Horizon Drive @ I-11 Interchange	STBG	-	-	\$9,785,000	-	-
HND_005	Henderson	I-11 Interchange at Nevada State/Wagonwheel Drive	Corridor study for new interchange and access roadways to the Nevada State College/Wagonwheel from I-11	I-11 Interchange at Nevada State/Wagonwheel Drive	STBG	-	-	\$1,957,000	-	-
CL20230015	Henderson	Lake Mead Parkway Trail Phase 1	Design and Construction of new trail, landscaping irrigation, lighting, and amenities as appropriate from Taylor to Warm Springs on Lake Mead Parkway.	From to of Distance (mile)	Carbon Reduction Program > 200K (Clark) < BR> TAP CL STBG	\$2,778,948	\$1,323,684	-	-	-
HND_006	Henderson	Lake Mead SR 546 Corridor	Corridor study of Lake Mead Parkway with grade separation of Boulder Highway and completion of the trail system within the corridor	Boulder Hwy to I-11 Interchange	STBG	-	-	\$1,957,000	-	-

Project ID	Project Sponsor	Project Name	Project Description	Project Limits	Funding Source	FY 25	FY 26	FY 27	FY 28	FY 29
CL20200122	Henderson	Lower Pittman Wash Trail Segment 3 - Warm Springs to Galleria (PE) and (CON)	Construction trail segment	Lower Pittman Wash Trail Segment 3 from Warm Springs Road (adjacent to the channel) to Galleria Drive (adjacent to the chaqnnel) of Distance (mile) N/A	CMAQ - Clark County	\$1,578,947	-	-	-	-
CL20230014	Henderson	Regenerative Sweeper	Purchase of one new regenerative street sweeper.	Not Location Specific	CMAQ - Clark County	\$368,421	-	-	-	-
XS20200032	Henderson	St Rose Parkway SR146 and Eastern Avenue Intersection Improvements (CON)	Intersection operational improvements including crosswalks, sidewalks, and ADA	Primary Crossstreet: St Rose Parkway, Secondary Crossstreet: Eastern Avenue	CMAQ - Clark County	\$700,877	-	-	-	-
CL20200120	Henderson	St Rose Parkway Trail North Side (PE) and (CON)	Design and construct St Rose Trail	St Rose Parkway Trail (north side) from Eastern to Las Vegas Boulevard of Distance (mile) N/A	TAP CL STBG	\$400,200	-	-	-	-
HND_009	Henderson	St Rose/215 System to System Interchange	Corridor study to upgrade the current off ramps into a system to system interchange	St. Rose Pkwy @ I-215 Interchange	STBG	-	-	-	-	\$1,957,000
CL20230013	Henderson	St. Rose Pkwy Ped Bridge	Construction of a new pedestrian bridge across St. Rose Parkway near Jeffreys Street with construction of a new trail along St. Rose Parkway. This will connect the bridge location to the existing trail near Eastern Avenue. Improvements include pedestrian bridge, trail, lighting, landscaping, striping, amenities and ADA improvements as appropriate.	Across St. Rose Parkway near Jeffreys Street to the existing trail near Eastern Avenue.	CMAQ - Clark County	-	\$4,421,053	-	-	-
CL20230016	Henderson	Street Lighting Retrofit - Phase 1	Replacement/Retrofit of streetlight poles and luminaries with upgraded and more efficient lighting in the neighborhoods surrounding downtown Henderson.	Various	Carbon Reduction Program > 200K (Clark)	\$1,263,158	-	-	-	-
CL20140106	Henderson	Via Inspirada Trail and City-Wide Bike Lane Improvements	Construct trail along Via Inspirada and City-Wide Bike Lane/trail crossing improvements including striping, flashing beacons, roadway, median and sidewalk modifications as necessary. A pedestrian bridge will also be installed linking the I-215 Trail and Dos Escuelas Park near Desert Shadow Trail.	Via Inspirada Trail from Bicentennial Pkwy to Executive Airport/Volunteer of Distance (mile) N/A	CMAQ - Clark County	\$254,942	-	-	-	-
XS20200033	Henderson	Via Nobila Trail Phase 1 Bridge	Construct 1 trail bridge	Bridge #: New Bridge	TAP CL STBG	\$1,052,632	-	-	-	-
CL20200127	Las Vegas	Alexander Road Overpass Widening at US95	Widen the existing Alexander Road Overpass at US95 to 4 lanes with sidewalks and bicycle lanes between Tenaya Way and Rainbow Boulevard.	From Tenaya Way to Rainbow Boulevard of Distance (mile) .5	STBG CL, Gas Tax	\$11,948,837	-	-	-	-
CL20240017	Las Vegas	Bruce Street Complete Streets, Bonanza Road to Owens Avenue	The scope of the project is to provide for design and NEPA of complete streets improvements along Bruce Street between Bonanza Road and Owens Avenue to improve bicycle/pedestrian comfort and safety.	From Bonanza Road to Owens Avenue of Distance (mile) 1.0	Congressionally Directed Spending	\$1,052,632	-	-	-	-

Project ID	Project Sponsor	Project Name	Project Description	Project Limits	Funding Source	FY 25	FY 26	FY 27	FY 28	FY 29
CL20210022	Las Vegas	CC215 Beltway Trail Bridges at Summerlin Parkway	Provide trail bridges to the existing CC215 Beltway Trail over Sunset Run Drive and Sky Vista Drive. Includes trail path connections to the existing trail.	CC215 Beltway from Sunset Run Drive to Sky Vista Drive of Distance (mile) 0.1	CMAQ - Clark County	\$7,800,000	-	-	-	-
CL20200130	Las Vegas	Charleston Boulevard Underpass Reconstruction (aka Las Vegas - Charleston Boulevard Underpass)	Reconstruct/Rehabilitate the Charleston Boulevard Underpass to better accommodate vehicular and pedestrian traffic between Grand Central Parkway and Art Way.	From Grand Central Parkway to Art Way of Distance (mile) 0.4	Congressionally Directed Spending	\$2,105,264	-	-	-	-
CL20140109	Las Vegas	Cheyenne Avenue between Hualapai Way and Jones Boulevard	Construct 10 bus turnouts along Cheyenne Avenue between Hualapai Way and Jones Boulevard. Cheyenne/ Jones Westbound, Cheyenne/ Torrey Pines Westbound, Cheyenne/ Rainbow Eastbound, Cheyenne/ Tenaya Westbound, Cheyenne/ Buffalo Westbound & Eastbound, Cheyenne/ Cimarron Eastbound, Cheyenne/ Soaring Gulls Westbound, Cheyenne/ Durango Eastbound, and Cheyenne/ Grand Canyon Westbound	Primary Crossstreet: Cheyenne Avenue, Secondary Crossstreet: Jones (WB), From Cheyenne To Torrey Pines (WB) , From Cheyenne To Rainbow (EB) , From Cheyenne To Tenaya (WB) , From Cheyenne To Buffalo (WB & EB) , From Cheyenne To Cimarron (EB) , From Cheyenne To Soaring Gulls (WB) , From Cheyenne To Durango (EB) , From Cheyenne To Grand Canyon (WB)	CMAQ - Clark County	\$2,631,579	-	-	-	-
CLV_015	Las Vegas	City of Las Vegas Vision Zero Improvements	Implement Vision Zero improvements throughout the City of Las Vegas on High Injury Network roadways. Adopted countermeasures for reducing fatalities: signage, striping, enhanced pedestrian & bike facilities, median island modifications, ADA/ PROWAG compliant ramps, traffic signal & streetlight upgrades, pavement rehabilitation, etc.	Alignments include Valley View Blvd, Charleston Blvd to Desert Inn Road; Bonanza Road, Lamb Boulevard to Nellis Boulevard; Eastern Avenue, US 95 to Owens Avenue; Industrial Road, Sahara Avenue to Wyoming Avenue; Lamb Boulevard, Sherrill Avenue to Owens Avenue; Pecos Road, Charleston Boulevard to Owens Avenue; Pennwood Avenue, Decatur Boulevard to Valley View Boulevard; Torrey Pines Drive, Charleston Boulevard to US 95; and Alexander/ Hualapai, Cheyenne to Cimarron.	CMAQ - Clark County	-	-	\$5,485,000	\$6,985,000	-
CLV_015	Las Vegas	City of Las Vegas Vision Zero Improvements	Implement Vision Zero improvements throughout the City of Las Vegas on High Injury Network roadways. Adopted countermeasures for reducing fatalities: signage, striping, enhanced pedestrian & bike facilities, median island modifications, ADA/ PROWAG compliant ramps, traffic signal & streetlight upgrades, pavement rehabilitation, etc.	Alignments include Valley View Blvd, Charleston Blvd to Desert Inn Road; Bonanza Road, Lamb Boulevard to Nellis Boulevard; Eastern Avenue, US 95 to Owens Avenue; Industrial Road, Sahara Avenue to Wyoming Avenue; Lamb Boulevard, Sherrill Avenue to Owens Avenue; Pecos Road, Charleston Boulevard to Owens Avenue; Pennwood Avenue, Decatur Boulevard to Valley View Boulevard; Torrey Pines Drive, Charleston Boulevard to US 95; and Alexander/ Hualapai, Cheyenne to Cimarron.	TAP CL	-	-	-	\$3,600,000	-

Project ID	Project Sponsor	Project Name	Project Description	Project Limits	Funding Source	FY 25	FY 26	FY 27	FY 28	FY 29
CLV_015	Las Vegas	City of Las Vegas Vision Zero Improvements	Implement Vision Zero improvements throughout the City of Las Vegas on High Injury Network roadways. Adopted countermeasures for reducing fatalities: signage, striping, enhanced pedestrian & bike facilities, median island modifications, ADA/PROWAG compliant ramps, traffic signal & streetlight upgrades, pavement rehabilitation, etc.	Alignments include Valley View Blvd, Charleston Blvd to Desert Inn Road; Bonanza Road, Lamb Boulevard to Nellis Boulevard; Eastern Avenue, US 95 to Owens Avenue; Industrial Road, Sahara Avenue to Wyoming Avenue; Lamb Boulevard, Sherrill Avenue to Owens Avenue; Pecos Road, Charleston Boulevard to Owens Avenue; Pennwood Avenue, Decatur Boulevard to Valley View Boulevard; Torrey Pines Drive, Charleston Boulevard to US 95; and Alexander/Hualapai, Cheyenne to Cimarron.	STBG	-	-	-	\$3,515,000	-
CL20230004	Las Vegas	City of Las Vegas Vision Zero Improvements	Implement Vision Zero improvements throughout the City of Las Vegas on High Injury Network roadways. Improvements to include adopted countermeasures for reducing fatalities: signage, striping, enhanced pedestrian & bike facilities, median island modifications, ADA/PROWAG compliant ramps, traffic signal & streetlight upgrades, pavement rehabilitation, etc. Corridors to include: Charleston - Rainbow to Westwind, Pennwood - Decatur to Valley View, Eastern - US 95 to Owens, Lamb - Sherrill to Owens, Pecos - Charleston to Owens, Torrey Pines - Charleston to US 95, Bonanza - Lamb to Nellis, and Industrial - Sahara to Wyoming.	From Rainbow Blvd to Westwind Rd of Distance (mile) 1.4, At Pennwood Avenue From Decatur Boulevard To Valley View Boulevard of Distance (pi.mile) 1 , At Eastern Avenue From US95 To Owens Avenue of Distance (pi.mile) 1.4 , At Lamb Boulevard From Sherrill Avenue To Owens Avenue of Distance (pi.mile) 1.9 , At Pecos Road From Charleston Boulevard To Owens Avenue of Distance (pi.mile) 2.1 , At Torrey Pines Drive From Charleston Boulevard To US95 of Distance (pi.mile) 1 , At Bonanza Road From Lamb Boulevard To Nellis Boulevard of Distance (pi.mile) 1 , At Industrial Road From Sahara Avenue To Wyoming Avenue of Distance (pi.mile) .7	CMAQ - Clark County < BR> Congressionally Directed Spending	-	\$12,294,737	-	-	-
CLV_016	Las Vegas	City-Wide Traffic Signal Improvements	Construct new traffic signals and intersection improvements. Improvements will include traffic signal system components, enhanced lighting, curb and gutter, sidewalk and ADA upgrades, medians, pedestrian and bicycle safety upgrades, ITS infrastructure, signage, and striping modifications.	Lake Mead/Hillpointe, Gowan/Cimarron, Ann/Shamburger, and Harris/Lamb.	CMAQ - Clark County	-	-	\$4,892,500	-	-
CL20200131	Las Vegas	City-Wide Traffic Signal Improvements	Construct new traffic signals and intersection improvements at Lake Mead/Hillpointe, Gowan/Cimarron, Ann/Shamburger, and Harris/Lamb. Improvements will include traffic signal system components, enhanced lighting, curb and gutter, sidewalk and ADA upgrades, medians, pedestrian and bicycle safety upgrades, ITS infrastructure, signage, and striping modifications.	Primary Crossstreet: Lake Mead Boulevard, Secondary Crossstreet: Hillpointe Road, From Gowan Road To Cimarron Road , From Ann Road To Shamburger Road , From Harris Avenue To Lamb Boulevard	CMAQ - Clark County	\$21,885	-	-	-	-

Project ID	Project Sponsor	Project Name	Project Description	Project Limits	Funding Source	FY 25	FY 26	FY 27	FY 28	FY 29
CL20200134	Las Vegas	CLV Safe Routes to School Program	The project consists of internal City of Las Vegas labor to support our Safe Routes to School Program to encourage safe walking and bicycling to and from schools. Tasks may include in-house study and design for school-related transportation improvements, school and community workshops and correspondence, bicycle and pedestrian safety events, and development of safety curriculum for elementary and middle school classrooms.	Various	TAP CL	-	-	\$146,775	\$146,775	\$146,775
CL20200134	Las Vegas	CLV Safe Routes to School Program	The project consists of internal City of Las Vegas labor to support our Safe Routes to School Program to encourage safe walking and bicycling to and from schools. Tasks may include in-house study and design for school-related transportation improvements, school and community workshops and correspondence, bicycle and pedestrian safety events, and development of safety curriculum for elementary and middle school classrooms.	Various	TAP CL STBG	-	\$326,443	-	-	-
CL20240015	Las Vegas	High Injury Network Streetlight Safety Upgrades	Conversion of existing high pressure sodium (HPS) and first generation light emitting diode(LED) streetlight luminaires to more resilient and energy efficient Next Generation LED luminaires along several of the City's High Injury Network corridors where traffic fatalities and serious injuries are heavily concentrated. Project limits include: Sahara Avenue from Durango Drive to Boulder Highway; Buffalo Drive from Sahara Avenue to Lone Mountain Road; Rainbow Boulevard from Rancho Drive to Sahara Avenue; Rancho Drive from US-95 to Mesquite Avenue; Decatur Boulevard from Ann Road to Cheyenne Avenue; Las Vegas Wash Trail from Owens Avenue to Charleston Boulevard and the area bounded by Summerlin Pkwy., Charleston Blvd., Rampart Blvd., and CC-215.	From Durango Drive to Boulder Highway of Distance (mile) 10.0, At Buffalo Drive From Sahara Avenue To Lone Mountain Road of Distance (pi.mile) 7.2 , At Rainbow Boulevard From Rancho Drive To Sahara Avenue of Distance (pi.mile) 7.2 , At Rancho Drive From US95 To Mesquite Avenue of Distance (pi.mile) 7 , At Decatur Boulevard From Ann Road To Cheyenne Avenue of Distance (pi.mile) 3.1 , At Las Vegas Wash Trail From Owens Avenue To Charleston Boulevard of Distance (pi.mile) 2.9	Congressionally Directed Spending	\$2,631,579	-	-	-	-
CLV_018	Las Vegas	Historic Westside Complete Streets	Complete street improvements including; new bike lanes, pavement reconstruction, widened sidewalk, enhanced transit stops, enhanced streetlighting, street trees and other pedestrian enhancements.	Washington Avenue, Martin L. King Blvd to I-15 and H Street, Bonanza Rd to Owens Ave.	STBG	-	-	-	\$20,644,250	-

Project ID	Project Sponsor	Project Name	Project Description	Project Limits	Funding Source	FY 25	FY 26	FY 27	FY 28	FY 29
CLV_018	Las Vegas	Historic Westside Complete Streets	Complete street improvements including; new bike lanes, pavement reconstruction, widened sidewalk, enhanced transit stops, enhanced streetlighting, street trees and other pedestrian enhancements.	Washington Avenue, Martin L. King Blvd to I-15 and H Street, Bonanza Rd to Owens Ave.	CMAQ - Clark County	-	-	-	\$3,800,000	-
CLV_018	Las Vegas	Historic Westside Complete Streets	Complete street improvements including; new bike lanes, pavement reconstruction, widened sidewalk, enhanced transit stops, enhanced streetlighting, street trees and other pedestrian enhancements.	Washington Avenue, Martin L. King Blvd to I-15 and H Street, Bonanza Rd to Owens Ave.	Carbon Reduction Program > 200K (Clark)	-	\$526,316	-	\$5,400,000	-
CL20240006	Las Vegas	Lake Mead Boulevard ITS Improvements, Buffalo Drive to Rancho Drive	Construction of Intelligent Transportation System (ITS) communications in Lake Mead Blvd. from Buffalo Dr. to Rancho Dr. Improvements to include conduit, wiring, fiber optic cables, pull boxes, CCTV cameras, operations and maintenance, and other appurtenances necessary to complete the project.	From Buffalo Drive to Rancho Drive of Distance (mile) 4.2	CMAQ - Clark County	\$3,500,000	-	-	-	-
CL20230001	Las Vegas	Las Vegas - Next Generation Signal Prioritization	The Next Generation Signal Prioritization project is to implement a cloud-based signal timing optimization system that supports traffic signal preemption for the City of Las Vegas emergency vehicles. The project will be implemented citywide with the goal to decrease emergency response times and transit travel times throughout the City and the region.	Not Location Specific	Congressionally Directed Spending	\$2,700,000	-	-	-	-

Project ID	Project Sponsor	Project Name	Project Description	Project Limits	Funding Source	FY 25	FY 26	FY 27	FY 28	FY 29
CL20240007	Las Vegas	Las Vegas Median Island and Speed Cushion Improvements	The project consists of the construction of median island improvements that includes the installation of concrete median curbing for access management and u-turn prevention with associated signing and markings. Locations are as follows: Dorrell Ln at Fort Apache Rd, Cielo Vista Ave from Pueblo Vista Dr to Biscayne Hills Wy, Oxford Cross Dr from Anasazi Dr to Crestdale Ln, Rebecca Rd from Azure Dr to Tropical Pkwy, Sahara Ave and Santa Paula Dr, Stewart Ave from Las Vegas Wash to Nellis Blvd, Whispering Sand Dr from Bradley Rd to Ceddoa Dawn St, Brent Ln from Tee Pee Ln to Skye Canyon Park Dr, Corbett St from N. Leon Ave to Bradley Rd, El Campo Grand Ave from N. Leon Ave to Bradley Rd, Echelon Point Dr from Grand Canyon Dr to Tee Pee Ln, Bullring Ln from Bradley Rd to White Meadow St, Azure Dr from Serene Dr to Rebecca Rd, J St from Lake Mead Blvd to Jimmy Ave, Fire Mesa St from Trinity Peak Av. to Peak Dr, Donald Nelson Ave from Topaz Creek St to Jensen St, Whispering Sands Dr from Buffalo Dr to Gracious Orchard St. The project also includes the construction of asphalt speed cushions and striping for traffic calming on the following alignments: O'Bannon Dr from Durango Dr to Rainbow Blvd (23), Via Olivero Ave from Durango Dr to Rainbow Blvd (23) and Tenaya Wy from Del Rey Ave to Sahara Ave (5).	Primary Crossstreet: Dorrell Lane, Secondary Crossstreet: Fort Apache Road, At Cielo Vista Avenue From Pueblo Vista Drive To Biscayne Hills Way of Distance (pi.mile) .1 , At Oxford Cross Drive From Anasazi Drive To Crestdale Lane of Distance (pi.mile) .2 , At Rebecca Road From Azure Drive To Tropical Parkway of Distance (pi.mile) .2 , From Sahara Avenue To Santa Paula Drive , At Stewart Avenue From Las Vegas Wash To Nellis Boulevard of Distance (pi.mile) .1 , At Whispering Sand Drive From Bradley Road To Ceddoa Dawn Street of Distance (pi.mile) .4 , At Brent Lane From Tee Pee Lane To Skye Canyon Park Drive of Distance (pi.mile) .2 , At O'Bannon Drive From Durango Drive To Rainbow Boulevard of Distance (pi.mile) 2 , At Corbett Street From North Leon Avenue To Bradley Road of Distance (pi.mile) .2 , At El Campo Grand Avenue From North Leon Avenue To Bradley Road of Distance (pi.mile) .3 , At Echelon Point Drive From Grand Canyon Drive To Tee Pee Lane of Distance (pi.mile) .2 , At Bullring Lane From Bradley Road To White Meadow Street of Distance (pi.mile) .2 , At Azure Drive From Serene Drive To Rebecca Road of Distance (pi.mile) .1 , At Via Olivero Avenue From Durango Drive To Rainbow Boulevard of Distance (pi.mile) 2 , At J Street From Lake Mead Boulevard To Jimmy Avenue of Distance (pi.mile) .2 , At Fire Mesa Street From Trinity Peak Avenue To Peak Drive of Distance (pi.mile) .1 , At Donald Nelson Avenue From Topaz Creek To Jensen Street of Distance (pi.mile) .2 , At Whispering Sands Drive From Buffalo Drive To Gracious Orchard Street of Distance (pi.mile) .4	TAP CL STBG	\$2,306,084	-	-	-	-
CL20240024	Las Vegas	Las Vegas Smarter and Safer Way to Cross - FY23 SMART Grant	This USDOT SMART Grant pilot project is located within Downtown Las Vegas and includes (1) the installation of passive pedestrian detection systems at intersections to detect pedestrians queued at and crossing in marked crosswalks, (2) adjusting traffic signal timings and unprotected crossing flasher durations in real time based on pedestrian volumes and speed, and (3) the installation of a user-adaptive traffic signal system to adjust traffic signal timings along intersecting streets.	From Main Street to Las Vegas Boulevard of Distance (mile) .4, At Las Vegas Boulevard From Ogden Avenue To Carson Avenue of Distance (pi.mile) .2 , At Carson Avenue From Main Street To Las Vegas Boulevard of Distance (pi.mile) .4 , At Main Street From Ogden Avenue To Carson Avenue of Distance (pi.mile) .2	FHWA Grant	\$2,000,000	-	-	-	-

Project ID	Project Sponsor	Project Name	Project Description	Project Limits	Funding Source	FY 25	FY 26	FY 27	FY 28	FY 29
CLV_026	Las Vegas	Rancho Drive Complete Streets, Mesquite Avenue to Charleston Boulevard	Complete street improvements include: reconstruct roadway pavement, with bike lanes, bus turnouts, street trees, widened sidewalks, ITS upgrades, traffic signal improvements, and ADA enhancements.	Rancho Drive - Mesquite to Sahara	STBG	-	-	-	-	\$17,646,892
CLV_026	Las Vegas	Rancho Drive Complete Streets, Mesquite Avenue to Charleston Boulevard	Complete street improvements include: reconstruct roadway pavement, with bike lanes, bus turnouts, street trees, widened sidewalks, ITS upgrades, traffic signal improvements, and ADA enhancements.	Rancho Drive - Mesquite to Sahara	TAP CL	-	-	-	-	\$308,704
CLV_026	Las Vegas	Rancho Drive Complete Streets, Mesquite Avenue to Charleston Boulevard	Complete street improvements include: reconstruct roadway pavement, with bike lanes, bus turnouts, street trees, widened sidewalks, ITS upgrades, traffic signal improvements, and ADA enhancements.	Rancho Drive - Mesquite to Sahara	Carbon Reduction Program > 200K (Clark)	-	-	-	-	\$635,904
CLV_026	Las Vegas	Rancho Drive Complete Streets, Mesquite Avenue to Charleston Boulevard	Complete street improvements include: reconstruct roadway pavement, with bike lanes, bus turnouts, street trees, widened sidewalks, ITS upgrades, traffic signal improvements, and ADA enhancements.	Rancho Drive - Mesquite to Sahara	Locally Funded - Capital Improvement Program	-	-	-	-	\$44,000,000
CL20200125	Las Vegas	Rancho Drive Improvements, Coran Lane to Decatur Boulevard	Complete street improvements including pedestrian, bicycle and high capacity transit along Rancho Drive between Coran Lane and Decatur Boulevard. Project will add a bus/bike lane in each direction.	From Coran Lane to Decatur Boulevard of Distance (mile) 1.2	CMAQ - Clark County	\$11,838,420	-	-	-	-
CL20200124	Las Vegas	Rancho Drive Improvements, Mesquite Avenue to Coran Lane	Complete street improvements including pedestrian, bicycle, and high capacity transit along Rancho Drive between Mesquite Avenue and Coran Lane. Project will add a bus/bike lane in each direction.	From Mesquite Avenue to Coran Lane of Distance (mile) 1.9	CMAQ - Clark County	\$1,735,961	-	-	-	-
CLV_030	Las Vegas	Reconnecting the Historic Westside, Bonanza Road & F Street	Complete street improvements. Project improvements to include new pavement, widened sidewalks, bike lanes, enhanced streetlighting, street trees and landscaping, wayfinding signage, and other pedestrian safety improvements. Project was awarded Reconnecting Community funding for PE and NEPA.	Bonanza Road between Martin L. King Jr. Blvd and D Street and F Street between Washington Ave and Owens Ave.	Carbon Reduction Program > 200K (Clark)	-	-	-	-	\$4,892,500

Project ID	Project Sponsor	Project Name	Project Description	Project Limits	Funding Source	FY 25	FY 26	FY 27	FY 28	FY 29
CL20240025	Las Vegas	SAFEConnect: Safe Actions Fostering Equitable Connectedness in East Las Vegas (FY23 Safe Streets for All Grant)	This USDOT Safe Streets for All (SS4A) grant project consists of (1) school safety and demonstration project at Hollingsworth STEAM Academy, (2) supplemental planning for a Community-wide lighting assessment for the East Las Vegas Neighborhood Revitalization Strategy Area (NRSA), (3) walk audits at eight schools, parks, and senior centers, and (4) high impact safety improvements along Charleston Boulevard, Fremont Street, Eastern Avenue, and at Sunrise Elementary/ Roy Martin Middle Schools.	From Bruce Street to Mojave Road of Distance (mile) 1.1, At Fremont Street From Maryland Parkway To Atlantic Street of Distance (pi.mile) 1.2 , At Eastern Avenue From Cedar Avenue To St Louis Avenue of Distance (pi.mile) 1.6 , At Bruce Street From Sunrise Avenue To Ogden Avenue of Distance (pi.mile) .1 , At Ogden Avenue From Bruce Street To 20th Street of Distance (pi.mile) .2 , At Sunrise Avenue From Bruce Street To 20th Street of Distance (pi.mile) .2 , At 20th Street From Sunrise Avenue To Ogden Avenue of Distance (pi.mile) .1	Safe Streets and Roads For All Grant	\$1,700,000	-	\$10,267,800	-	-
CL20220003	Las Vegas	Stewart Avenue Bicycle and Pedestrian Improvements, 6th Street to Nellis Boulevard	Project includes protected bike lanes, widened sidewalk, pavement overlay, enhanced transit stops, enhanced lighting, street trees and median landscaping along Stewart Avenue from 6th Street to Nellis Boulevard.	From 6th Street to Nellis Boulevard of Distance (mile) 4.3	Congressionally Directed Spending < BR> RAISE Grant	\$70,000	\$50,300,000	-	-	-
CL20240016	Las Vegas	Valley View Boulevard Pedestrian Safety Improvements	Construction of targeted safety improvements along Valley View Boulevard between Charleston Boulevard and Desert Inn Road. Improvements include signalized pedestrian crossings with pedestrian hybrid beacons at El Conlon Avenue and Sycamore Drive, pedestrian flasher at El Camino Avenue, pedestrian median refuge islands, upgraded streetlighting improvements, and improved traffic signal operations.	From Charleston Bouelvard to Desert Inn Road of Distance (mile) 2.0	Congressionally Directed Spending	\$526,316	-	-	-	-
CL20110121	Las Vegas	West Charleston Boulevard Bus Turnouts	Construct five (5) bus turnouts/right turn lanes on Charleston Boulevard at the following locations: EB west of Merialdo Avenue; WB east of Cimarron Road; WB east of Antelope Way; EB west of Campbell Drive; and WB east of Campbell Drive.	Primary Crossstreet: Charleston Blvd, Secondary Crossstreet: Campbell Dr	CMAQ - Clark County	\$4,600,000	-	-	-	-

Project ID	Project Sponsor	Project Name	Project Description	Project Limits	Funding Source	FY 25	FY 26	FY 27	FY 28	FY 29
CL20240022	Nevada Department of Transportation	Charleston Blvd SR 159 Urban Lite - Permanent Full = 5.425 Mile Corridor	Includes permanent detection, CCTV, VSL, and side mounted DMS. ATM is not required, but speed management is needed, and permanent detection is valuable and achievable for corridor management for Charleston Blvd (SR 159) between I 15 and Nellis Blvd (SR 612) to address bottlenecks and congestion. Project segment includes 25 signals. Project to keep signals, CCTV, and detection where applicable along corridor and only includes nominal values for those devices if additions are required for implementation. This project concept includes side mounted DMS and VSL every 3 miles. Devices should typically be located midblock where these devices do not already exist. CCTV and vehicle detection devices should also be placed every mile with CV devices every 10 miles. Where power is available, connection to power is desired. Solar powered devices may be required if no connection to power is readily available.		NHPP < BR> STBG State-Wide	-	-	\$2,042,654	-	-
CL20220031	Nevada Department of Transportation	EV Charging Upgrade at Moapa	EV Charging Upgrade at Moapa	Not Location Specific	NATIONAL ELECTRIC VEHICLE INFRASTRUCTURE	\$1,000,000	-	-	-	-
CL20220030	Nevada Department of Transportation	EV Charging with NV Energy Partnership	Construct New EV Charging at Jean/ Primm	Not Location Specific	NATIONAL ELECTRIC VEHICLE INFRASTRUCTURE	\$10,000,000	-	-	-	-
CL20190038	Nevada Department of Transportation	I 15 Construct Interchange Via Nobila	Construct Interchange	Nearest Crossstreet: I 15 Via Nobila Interchange	NHPP, State Gas Tax	\$6,000,000	-	\$100,000,000	-	-
CL20220045	Nevada Department of Transportation	I 15 NB Truck Climbing Lane	I 15 NB CL 68.5 to CL 69.7 Truck Climbing Lane	From CL MP 68.5 to CL MP 69.7 of Distance (mile) 1.2 Milepost begins at 68.5 ends at 69.7	State Gas tax	-	-	-	\$7,948,000	-
CL20220046	Nevada Department of Transportation	I 15 SB Truck Climbing Lane	I 15 SB CL 64.4 to CL 66.1 Truck Climbing Lane	From CL MP 68.5 to CL MP 66.1 of Distance (mile) -2.4 Milepost begins at 68.5 ends at 66.1	State Gas tax	-	-	-	\$5,722,000	-
CL20220042	Nevada Department of Transportation	I 15 Truck Climbing Lane	I15 CL 89.9 to CL 91.1 NB Truck Climbing Lane	From CL MP 89.9 to CL MP 91.1 of Distance (mile) 1.2 Milepost begins at 89.9 ends at 91.1	State Gas tax	-	-	-	\$2,801,000	-
CL20220041	Nevada Department of Transportation	I 15 Truck Climbing Lane	I 15 CL 90.8 to CL 89.7 SB Truck Climbing Lane	From CL MP 89.7 to CL MP 90.8 of Distance (mile) 1.1 Milepost begins at 89.7 ends at 90.8	State Gas tax	-	-	-	\$3,677,000	-
CL20220005	Nevada Department of Transportation	I 15, ADA IMPROVEMENTS, SIGNAGE REPLACEMENT / UPGRADE, LIGHTING IMPROVEMENTS, Package 2	ADA IMPROVEMENTS, SIGNAGE REPLACEMENT / UPGRADE, LIGHTING IMPROVEMENTS	From MP CL 50.1 to MP CL 50.67 of Distance (mile) 0.57 Milepost begins at 50.1 ends at 50.67, At SR 610 From MP CL 0 To MP CL 2.02 of Distance (pi.mile) 2.02 Begin: 0 End: 2.02	NHPP	-	\$2,500,000	-	-	-

Project ID	Project Sponsor	Project Name	Project Description	Project Limits	Funding Source	FY 25	FY 26	FY 27	FY 28	FY 29
CL20220012	Nevada Department of Transportation	I 215, Las Vegas, South of the Windmill Interchange to South Valley View Blvd - Preservation	1" Cold Mill, 1" Asphalt Rubber Overlay on Existing Asphalt Pavement Roadway.	From CL MP 7.9 to CL MP 10.9 of Distance (mile) 3 Milepost begins at 7.9 ends at 10.9	NHPP < BR> STBG State-Wide	\$17,105,000	-	-	-	-
CL20220011	Nevada Department of Transportation	IR 15, CL, from Garnet Interchange to South of Valley of Fire Interchange - Preservation- CON	2.75" Cold Mill, 2" Dense Grade with 0.75" Open Grade and Full Depth Patching in Spot Locations.	From CL MP 64.6 to CL MP 75.6 of Distance (mile) 11 Milepost begins at 64.6 ends at 75.6	NHPP < BR> STBG State-Wide	-	\$22,000,000	-	-	-
CL20190039	Nevada Department of Transportation	IR15, Las Vegas, Ph2 - NB CD to US95N & Sahara Interchange reconstruct	Perform final design for NEON Phase 2, right-of-way acquisition services, and update the NEPA document. NEON Phase 2 is to construct the I-15 NB collector distributor road between I-15 N and US-95 N as well as reconstruct the Sahara Interchange.	From Desert Inn Rd to US 95 of Distance (mile) 3.48 Milepost begins at 39.42 ends at 42.9	NHPP	-	\$350,000,000	-	-	-
CL20180064	Nevada Department of Transportation	NDOT FRI2 Bond Repayments	Repayments of the FRI2 Bonds	Not Location Specific	State Fuel Revenue Clark	\$9,243,120	\$9,243,120	\$9,243,120	\$9,243,120	\$9,243,120
CL20200027	Nevada Department of Transportation	Rainbow Blvd ADA	2-3/4 inch coldmill with 2 inch plantmix bituminous surface with open graded surface. Patching, signal replacement, sign panel replacement, and ADA improvements.	From West Tropicana Avenue to Westcliff Drive of Distance (mile) 5.5 Milepost begins at 0 ends at 5.5	STBG State-Wide	\$23,000,000	-	-	-	-

Project ID	Project Sponsor	Project Name	Project Description	Project Limits	Funding Source	FY 25	FY 26	FY 27	FY 28	FY 29
CL20240023	Nevada Department of Transportation	Rancho Dr (SR 599) Urban Lite - Permanent Full = 9.25 Mile Corridor	Includes permanent detection, CCTV, VSL, side mounted DMS, and continuous fiber communications. ATM is not required, but speed management is needed, and permanent detection is valuable and achievable for corridor management for Rancho Dr (SR 599) from CC 215 to US 95 to address bottlenecks and level of travel time reliability. This concept also includes 1 location for WWD ramp detection deployment as recommended by the WWD study. Project segment includes 19 signals. Project to keep signals and CCTV where applicable along corridor and only includes nominal values for those devices if additions are required for implementation. This project concept includes side mounted DMS and VSL every 3 miles. Devices should typically be located midblock where these devices do not already exist. CCTV and vehicle detection devices should also be placed every mile with CV devices every 10 miles. Where power is available, connection to power is desired. Solar powered devices may be required if no connection to power is readily available. There is existing fiber along approximately 2.15 miles of this corridor that should be connected to with new infrastructure, as labeled "Duct Available - Fiber Available" in the GeoHub. This project recommends new fiber on one side of the roadway for the remaining miles where the GeoHub labels the corridor "Opportunity Route - Joint Construction". As Nevada deploys broadband statewide, it should include stubouts and pull box infrastructure to be able to connect between station locations, as needed.		NHPP < BR> STBG State-Wide	-	-	\$4,538,146	-	-
CL20170037	Nevada Department of Transportation	SR 147 Lake Mead Blvd Preservation and ADA Improvements	PAVEMENT PRESERVATION INCLUDING SIGN AND STRIPING REPLACEMENT, LIGHTING, TRAFFIC SIGNALS, ADA, AND SAFETY IMPROVEMENTS	Primary Interchange: N. Pecos Road, Secondary Interchange: 2.494 Miles East of Urban Limit	NHPP < BR> STBG State-Wide	-	-	-	\$38,200,000	-
CL20220025	Nevada Department of Transportation	SR 159 Charleston Blvd 3R, from Boulder Hwy to Nellis Blvd	Mill and overlay with hydraulic, SLI, ADA, and pedestrian safety improvements.	From CL MP 28.1 to CL MP 31 of Distance (mile) 2.9 Milepost begins at 28.1 ends at 31		-	-	\$13,720,547	-	-
CL20220020	Nevada Department of Transportation	SR 159, Las Vegas, from SR 160 to IR 215 - Preservation	2" Cold Mill, 2" Dense Grade with 0.75" Open Grade Overlay and Various Patching Locations	From SR 160 to I 215 of Distance (mile) 15.5 Milepost begins at 0 ends at 15.5	NHPP < BR> STBG State-Wide	-	-	\$17,000,000	-	-

Project ID	Project Sponsor	Project Name	Project Description	Project Limits	Funding Source	FY 25	FY 26	FY 27	FY 28	FY 29
CL20240019	Nevada Department of Transportation	SR 164 Nipton Road, Searchlight, From CA/NV Stateline to Searchlight	Pavement Improvement 2" Mill, 2" PBS + OG	From CA/NV STATELINE to SEARCHLIGHT of Distance (mile) 18.55 Milepost begins at 0 ends at 18.55	NHPP < BR> STBG State-Wide	-	-	-	\$45,279,700	-
CL20240018	Nevada Department of Transportation	SR 168 COYOTE SPRINGS	Pavement Improvement 2" Mill, 2" PBS + OG	From US 93 to I 15 of Distance (mile) 24.76 Milepost begins at 0 ends at 24.76	NHPP < BR> STBG State-Wide	-	-	-	\$46,868,400	-
CL20200046	Nevada Department of Transportation	SR 562 Sunset and SR 171 Mill and Overlay	ON SR 562, 2-3/4 INCH COLDMILL WITH 2 INCH PLANTMIX BITUMINOUS SURFACE WITH OPEN GRADED SURFACE. ON SR 171, NEX-GEN GROOVE AND GRIND (SOUTHBOUND ONLY)	From Las Vegas Blvd to Annie Oakley of Distance (mile) 3.17 Milepost begins at 25.35 ends at 28.52. At SR 171 From CL MP 0.00 To CL MP 0.64 of Distance (pi.mile) .64 Begin: 0 End: .64	STBG State-Wide	\$16,000,000	-	-	-	-
CL20190047	Nevada Department of Transportation	SR 573 Craig Road Pavement Preservation and ADA Improvements Project	Pavement Preservation and ADA Improvements	From Rainbow Blvd. to Las Vegas Blvd. of Distance (mile) 5.5 Milepost begins at .3 ends at 5.8	NHPP < BR> STBG State-Wide	-	-	\$25,000,000	-	-
CL20220024	Nevada Department of Transportation	SR 579 - Bonanza Rd Preservation	SR 579 - Bonanza Rd Preservation	From CL MP 0.0 to CL MP 2.2 of Distance (mile) 2.2 Milepost begins at 0 ends at 2.2	State Gas tax	-	\$10,927,600	-	-	-
CL20220026	Nevada Department of Transportation	SR 582 - Boulder Hwy Preservation	SR 582 - Boulder Hwy Preservation	From CL MP 8.5 to CL MP 15.4 of Distance (mile) 6.9 Milepost begins at 8.5 ends at 15.4	State Gas tax	-	-	\$36,375,200	-	-
CL20240021	Nevada Department of Transportation	SR 592 Flamingo Ave, Las Vegas, From Arville Street to IR 15	Pavement Improvement 2.75" Mill, 2" PBS + OG	From ARVILLE ST to I 15 of Distance (mile) 1.14 Milepost begins at 2.44 ends at 3.58	NHPP < BR> STBG State-Wide	-	-	-	\$17,259,165	-
CL20220016	Nevada Department of Transportation	SR 596 Jones Blvd, Las Vegas, From Sahara to US 95 Interchange	Mill and Fill, Roadbed Modification #2 Lane Oakey to US95, ADA upgrades	From Sahara to US 95 of Distance (mile) 2.2 Milepost begins at 3 ends at 5.2	State Gas tax	-	\$9,000,000	-	-	-
CL20240020	Nevada Department of Transportation	SR574 Cheyenne Ave, from US95 to MLK	Pavement Preservation	From US 95 to MLK of Distance (mile) 5 Milepost begins at 0 ends at 5	NHPP < BR> STBG State-Wide	-	-	-	\$28,546,299	-
CL20220022	Nevada Department of Transportation	US 93, Boulder, Veterans Memorial to Railroad Pass ltg; SR 173, Boulder, I 11 to US 93	2" Cold Mill, 2" Dense Grade with 0.75" Open Grade	From Veterans Hwy to Railroad Pass of Distance (mile) 2 Milepost begins at 6.6 ends at 8.6, At SR 173 From I 11 To US 95 of Distance (pi.mile) 1.1 Begin: 0 End: 1.1	NHPP < BR> STBG State-Wide	-	-	\$8,600,000	-	-
CL20220015	Nevada Department of Transportation	US 95, Clark County, South of the I-11 Interchange- Preservation	Mill and overlay with patching	From 37.85 to 55.15 of Distance (mile) 17.3 Milepost begins at 37.9 ends at 55.2	Congressionally Directed Spending < BR> NHPP < BR> STBG State-Wide	\$55,560,964	-	-	-	-
CL20220021	Nevada Department of Transportation	US 95, Indian Springs, from North of SR 157 to Indian Springs	2" Cold Mill, 2" Dense Grade with 0.75" Open Grade	From 93.72 to 121.89 of Distance (mile) 28.2 Milepost begins at 93.7 ends at 121.9	NHPP < BR> STBG State-Wide	-	\$50,000,000	-	-	-
CL20220010	Nevada Department of Transportation	US 95, Las Vegas, Martin L King Blvd to W. Lake Mead Blvd Preservation	Mill and Overlay	From CL 76.9 to CL 85.8 of Distance (mile) 8.86 Milepost begins at 76.94 ends at 85.8	NHPP < BR> STBG State-Wide	\$31,000,000	-	-	-	-
	Nevada Department of Transportation	SR 160/159 Corridor Study	SR 160/159 Corridor Study	SR 160/159 Corridor	NDOT Funding	-	-	-	-	\$20,000,000

Project ID	Project Sponsor	Project Name	Project Description	Project Limits	Funding Source	FY 25	FY 26	FY 27	FY 28	FY 29
	Nevada Department of Transportation	Passing/ Climbing Lane Recommendations	Passing/ Climbing Lane Recommendations	Various	NDOT Funding	-	-	-	-	\$5,000,000
	Nevada Department of Transportation	Preservation Program	Preservation Program on various NDOT facilities in Clark County	Various	NDOT Funding	-	-	-	-	\$120,000,000
	Nevada Department of Transportation	I-80, I-15, Truck Parking Availability System (TPAS) Multiple Locations	I-80, I-15, Truck Parking Availability System (TPAS) Multiple Locations	Various	NDOT Funding	-	-	-	\$6,650,000	\$7,600,000
CL20240026	Nevada Department of Transportation	Brightline West Corridor Identification and Development Award	Corridor Identification and Development Award funds Step 1 grant for the Brightline West High-Speed Intercity Passenger Rail System	Not Location Specific	FRA Federal Funds or Other Funds	\$500,000	-	-	-	-
CL20210023	North Las Vegas	Civic Center Drive/Alexander Road Project	This project consists of the design and construction to widen/infill/rehabilitate the existing pavement, upgrade the streetlights to LED, signs, striping, ADA upgrades, and other miscellaneous roadway improvements as needed.	From Cheyenne Avenue/Civic Center Drive to Alexander Road/Pecos Road of Distance (mile) 1.84	STBG State-Wide	\$6,461,121	-	-	-	-
CNLV_005	North Las Vegas	Civic Center Drive	Pavement replacement/rehabilitation, localized drainage improvements, intersection modifications, turning lanes, ADA upgrades, streetlight upgrades, sidewalk, and a bicycle lane. Design is currently under 232A-FTI2	Civic Center Drive between Carey and Cheyenne	CMAQ - Clark County	-	-	\$1,700,000	-	-
CNLV_005	North Las Vegas	Civic Center Drive	Pavement replacement/rehabilitation, localized drainage improvements, intersection modifications, turning lanes, ADA upgrades, streetlight upgrades, sidewalk, and a bicycle lane. Design is currently under 232A-FTI2	Civic Center Drive between Carey and Cheyenne	STBG	-	-	\$8,085,000	-	-
CNLV_006	North Las Vegas	Clayton Street Pedestrian Bridge	Design, right of way acquisition, and construction. Improvements include; new bridge for pedestrian and bicyclists, lighting and connections to existing pathways.	Clayton Street pedestrian bridge across the CC-215	CMAQ - Clark County	-	-	\$11,175,000	-	-
CNLV_001	North Las Vegas	I-15 / Apex Area Interchange Preliminary Study	Preliminary study to investigate the purpose and need for a new interchange along the I-15 corridor in addition to the existing interchange at Apex to address growth, economic development, and relieve future congestion. Study will include items such as traffic projections, conceptual design, Pre-NEPA, etc.	New interchange at Apex	STBG	-	-	\$1,957,000	-	-
CNLV_007	North Las Vegas	I-15/215 Interchange Signalization - Centennial Parkway/215.	Design and construction of traffic signals at the various intersections within the interchange.	Various intersections	CMAQ - Clark County	-	-	\$391,400	-	\$2,103,775
	North Las Vegas	Lake Mead Blvd Roadway Improvements	Design	Civic Center Drive to Pecos Ave	Locally Funded - Capital Improvement Program	-	-	\$7,294,375	\$7,200,000	-

Project ID	Project Sponsor	Project Name	Project Description	Project Limits	Funding Source	FY 25	FY 26	FY 27	FY 28	FY 29
CL20230008	North Las Vegas	LED Street Light Upgrades	This project will upgrade all High Pressure Sodium (HPS) streetlights fixtures to Light Emitting Diode (LED) fixtures.	Not Location Specific	Carbon Reduction Program > 200K (Clark)	\$1,052,632	\$842,105	-	-	-
CNLV_009	North Las Vegas	North 5th Street	Pavement replacement/rehabilitation, localized drainage improvements, intersection modifications, turning lanes, ADA upgrades, streetlight upgrades, and the addition of a side path for bicyclists and pedestrians. Design is currently under 149G-FI2	North 5th Street between Cheyenne and Lone Mountain	STBG	-	-	\$6,427,500	-	-
CNLV_009	North Las Vegas	North 5th Street	Pavement replacement/rehabilitation, localized drainage improvements, intersection modifications, turning lanes, ADA upgrades, streetlight upgrades, and the addition of a side path for bicyclists and pedestrians. Design is currently under 149G-FI2	North 5th Street between Cheyenne and Lone Mountain	TAP CL	-	-	\$3,500,000	-	-
CNLV_009	North Las Vegas	North 5th Street	Pavement replacement/rehabilitation, localized drainage improvements, intersection modifications, turning lanes, ADA upgrades, streetlight upgrades, and the addition of a side path for bicyclists and pedestrians. Design is currently under 149G-FI2	North 5th Street between Cheyenne and Lone Mountain	Carbon Reduction Program > 200K (Clark)	-	-	\$4,750,000	-	-
CNLV_010	North Las Vegas	Regenerative Street Sweepers	Purchase of three regenerative street sweepers	N/A	CMAQ - Clark County	-	-	-	-	\$1,369,900
CNLV_012	North Las Vegas	Tonopah Avenue Roadway Improvements	Design, right of way acquisition, and construction. Improvements include; pavement replacement/rehabilitation, signage, striping and streetlight upgrades.	Tonopah Avenue between Las Vegas Boulevard and Pecos Road	STBG	-	-	\$342,475	\$5,234,975	-
RTC_005	RTC	Advanced Intersection Analytics (Regional Program)	Region wide intersection analytics for vehicle ADT and turning movement volume and classification, safety analytics for red light running, speeding, near misses, etc.	Various	STBG	-	-	\$3,669,375	\$2,446,250	\$1,246,250
CL20200058	RTC	Capital Cost of Contracting (Preventive Maintenance)	Preventive Maintenance Capital Assistance under the capital cost of contracting policy. Service contract where contractor provides maintenance and transit service and recipient provides vehicles is eligible for 80% federal share of 40% of the contract.	Not Location Specific	FTA 5307 Lrg Urb Capital < BR> FTA 5310 Elderly/ Disabled Lrg Urb Capital	\$147,432,068	-	-	-	-
CL200308	RTC	Club Ride/College Pass Program	Regional Transportation Commission Club Ride program to encourage alternate modes of travel and reduce roadway congestion in the region.	Not Location Specific	CMAQ - Clark County < BR> Carbon Reduction Program > 200K (Clark) < BR> STBG CL	\$3,158,522	\$3,240,270	-	-	-

Project ID	Project Sponsor	Project Name	Project Description	Project Limits	Funding Source	FY 25	FY 26	FY 27	FY 28	FY 29
RTC_009	RTC	Club Ride/College Pass Program	Regional Transportation Commission Club Ride program to encourage alternate modes of travel and reduce roadway congestion in the region.	Not Location Specific	CMAQ - Clark County	-	-	\$3,197,263	\$3,337,557	\$3,484,864
RTC_011	RTC	Fixed Route Replacement Vehicles	Fixed Route Replacement Vehicles with a goal of obtaining zero emission vehicles to reduce greenhouse gas emissions and carbon pollutants for the region	Not Location Specific	CMAQ - Clark County	-	-	\$6,669,419	\$6,869,501	\$5,453,033
RTC_012	RTC	Paratransit Replacement Vehicles	Paratransit Replacement Vehicles with a goal of obtaining zero emission vehicles to reduce greenhouse gas emissions and carbon pollutants for the region	Not Location Specific	CMAQ - Clark County	-	-	\$3,351,118	\$6,903,303	-
RTC_015	RTC	RTC Bike Share Program	The RTC Bike Share program provides a docked bike share system throughout downtown Las Vegas. Currently RTC Bike Share is sized at 25 stations and an on-street bike fleet of over 100 bikes.	Various	CMAQ - Clark County	-	-	\$97,850	\$97,850	\$97,850
CL20230002	RTC	RTC Non-revenue electric vehicles	New non-revenue zero emission vehicles to replace existing gas/diesel fueled vehicles.	Not Location Specific	CMAQ - Clark County	-	\$1,052,632			
CL20150010	RTC	RTC Transit Fleet Buses	Acquire (215) buses for fixed-route bus replacement program	Not Location Specific	FTA 5307 Lrg Urb Capital < BR> FTA 5337 Good Repair < BR> STBG CL < BR> TIGER	\$37,463,895	-	-	-	-
XS20180021	RTC	RTC Transit Improvements, Repairs & Maintenance, Equipment	RTC Transit Improvements to include new bus shelters and equipment to preserve and improve the conditions and performance of the transit system.	Not Location Specific	Congressionally Directed Spending < BR> STBG CL	\$6,487,500	-	-	-	-
XS20180022	RTC	RTC Transit Improvements, Repairs & Maintenance, Equipment	RTC Transit Improvements to include new bus shelters and equipment to preserve and improve the conditions and performance of the transit system.	Not Location Specific	STBG	-	-	\$2,509,844	\$5,809,844	-
NV20090276	RTC	Regional Transit System Security Systems	Security systems for regional transit system	Not Location Specific	FTA 5307 Lrg Urb Capital	\$1,000,000	-	-	-	-
CL20190001	RTC	Training FTA, NTI	Training Federal Transit Administration and National Transit Institute	Not Location Specific	FTA 5307 Lrg Urb Capital	\$117,794	-	-	-	-
CL20150037	RTC	RTC Transit Facilities Acquisitions & Improvements	RTC Transit Facilities Land and Building Acquisitions & Improvements	Not Location Specific	FTA 5307 Lrg Urb Capital	\$10,000,000	-	-	-	-
CL20240040	RTC	Transit Oriented Development (TOD) Program Charleston Blvd	Transit Oriented Development (TOD) Pilot Program Charleston Blvd - comprehensive planning work (enhance economic development and transit ridership; facilitate multi-modal connectivity and accessibility; increase access to transit hubs; enable mixed-use development)	From Valley View Blvd to Rainbow Blvd	FTA 5338 Transit-TOD Planning Pilot Program	\$351,233	-	-	-	-